



LOVE PURPLE
LIVE GOLD

Sponsored Programs New Developments and Important Reminders

*Rebecca Trahan
and
Darya Courville*

*Office of Sponsored Programs
May 28, 2019*

1

Training Session Overview

- Revision to PS-98
- GeauxGrants project update
- Charitable Grants Pilot
- Q & A

2

Revisions to PS-98

3

PS-98 – LSU Financial Conflicts of Interest (FCOI) in Research

- Requires disclosure of Significant Financial Interests (SFI) to determine if there is a Financial Conflict of Interest related to external funding.
- Recommendation to expand coverage to ALL investigators who seek external funding made by LSU Internal Audit.
- Anticipated effective date for revised PS-98 – June 3, 2019

4

PS-98 – LSU Financial Conflicts of Interest (FCOI) in Research

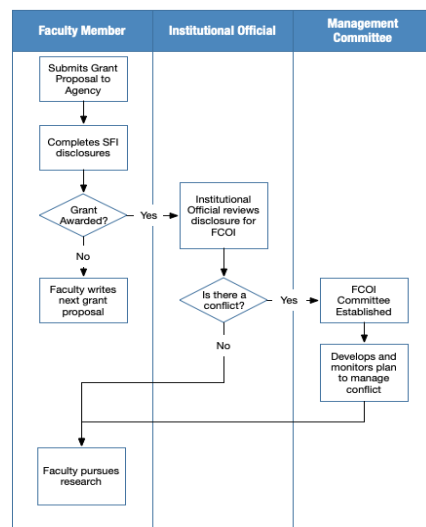
➤ Major Changes

- Significant Financial Interest (SFI) Disclosure for each Investigator must be on file for all sponsored projects at the time of proposal submission and award.
 - Active SFI Disclosure must be on file prior to proposal submission to sponsor.
 - Positive SFIs will be reviewed against Investigator's award(s) to determine if FCOI exists prior to award acceptance.
- Disclosures must be submitted on an annual basis for Investigators with active external funding.
- Applies to externally funded research and educational activities.
- Applies to all sponsors.

➤ Disclosures will be submitted electronically in GeauxGrants.

5

SFI Disclosure Workflow



Source: Beck, S.D. (2019). *Geaux Grants* [PowerPoint slides].

6

GeauxGrants Project Update

7

GeauxGrants

- InfoEd system has been rebranded GeauxGrants
- SPS replacement
- Provides support for pre-award, post-award reporting, and compliance
- Proposal Preparation and Review
- System to System (S2S) Grants.gov submissions
- Award and award modification documents will be stored in system.
- Expanded reported
- Compliance modules for:
 - Conflict of Interest
 - Human Subjects
 - Lab Animals

8

GeauxGrants Timeline

- Conflict of Interest Module
 - Significant Financial Interest Disclosures (including travel)
 - PM-11 – Disclosure of Outside Employment
 - Soft launch began mid-April 2019 (Vet School and MDA)
 - Full launch – June 3, 2019
- Sponsored Programs Module
 - User Acceptance Testing estimated June 19-21, 2019
 - Training and Soft launch estimated July 2019
 - Estimated launch August 2019
- Human Subjects Module
 - Estimated late Fall 2019
- Lab Animals Module
 - Estimated Spring 2020

9

GeauxGrants Help Desk

- <https://www.lsu.edu/geauxgrants/>
- Direct link to login to GeauxGrants
- Direct link to Help Desk webpage
 - Step-by-step screen shots on how to submit a COI Disclosure
 - Step-by-step screen shots for PM-11 reviewers
 - Frequently Asked Questions
 - Links to relevant policies

10

GeauxGrants Input

- Looking for individuals to participate in User Acceptance Testing.
- Looking for units interested in participating in Soft Launch
- Email Rebecca (rtrahan@lsu.edu) if interested.

11

GeauxGrants COI Open Labs

- Open Labs held in FTC lab (133 Himes Hall)
 - May 30th 1-2pm
 - May 30th 2:30-3:30pm
 - June 4th 10-11am
 - June 10th 2-3pm
 - June 18th 3-4pm
 - June 27th 9-10am
- Register at <http://training.lsu.edu>
- Walk-ins welcome

12

OSP Updates and Reminders

13

OSP Updates and Reminders

- WM Keck Foundation – Research Program Phase I Application Information added to Proposal Toolkit
- Proposal Processing Checklist – Departments/Principal Investigators (PI)
- What Mailing Deadline should be entered in SPS?
 - Electronic Submission Deadline
 - Mailing Deadline for hard copy submission
 - Sponsor requested date
 - If PI wants to submit early, enter desired submission date
 - If there is no sponsor deadline, leave blank or enter desired submission date (with comment)

14

Questions



15

OSP Contact Information

Location: 202 Himes Hall
Website: www.lsu.edu/osp
Phone: 578-2760
Fax: 578-2751
Email: osp@lsu.edu

Rebecca Trahan: rtrahan@lsu.edu
Darya Courville: ddcourv@lsu.edu

16